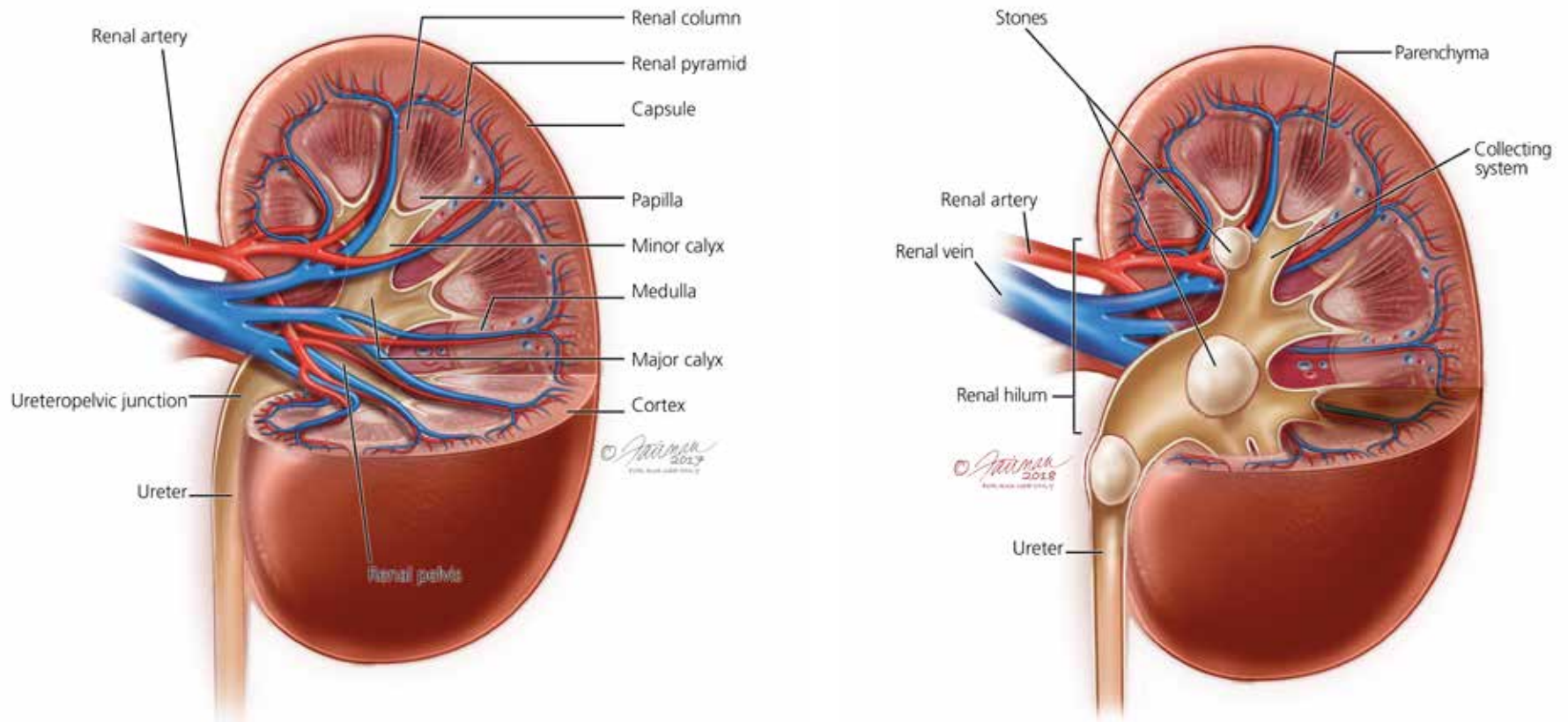


How Does the Kidney Work?

The kidneys are two bean-shaped organs that sit near the middle of the back below the rib cage. Our kidneys mainly clean our blood, balance fluids, remove waste as urine, keep the body's essential chemicals and electrolytes in balance and make hormones to keep our blood pressure stable, make red blood cells and keep our bones strong.

KIDNEY OVERVIEW



Notes:

What is kidney cancer?

A kidney mass, or tumor, is an abnormal growth in the kidney. Some kidney masses are benign (not cancerous) and some are malignant (cancerous). There are many different kinds of kidney tumors. The most common ones are Renal Cell Carcinoma (RCC), Benign Kidney Tumors and Wilms Tumor.

T1 Kidney Cancer



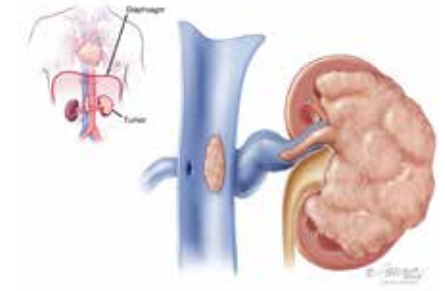
T2 Kidney Cancer



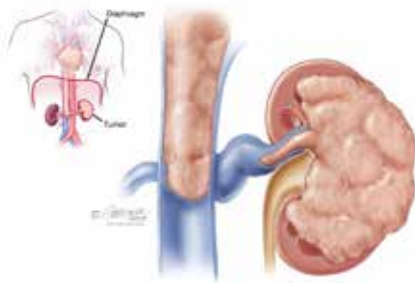
T3a Kidney Cancer



T3b Kidney Cancer



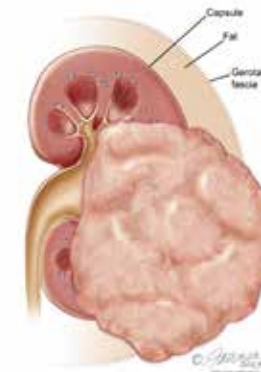
T3c Kidney Cancer



T4a Kidney Cancer



T4b Kidney Cancer



Notes:
